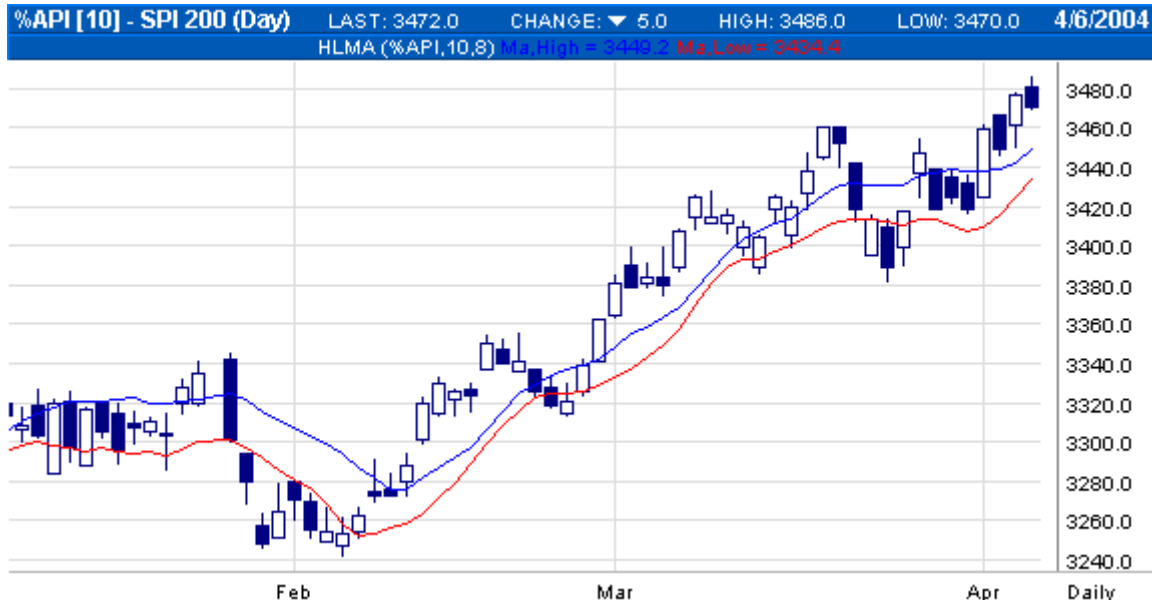




We provide a charting service for our clients through our Website at www.cklocke.com This SmartCharts service enables investors to keep up to date with various futures contracts such as the SPI index on the SFE and Gold futures traded on the COMEX in New York.



Front Page:

This gives you a list of available contracts and the exchanges where they are traded. Some contracts have the word composite attached. Composite includes the overnight trading session (first) and the main day session (second) with the data being combined. Contracts with no attachments are the main session only. To access the relevant data click on the contract name to open a pop-up window.

Tabulated Data:

To activate specific information just click the relevant icon:
The chart symbol pulls up a chart for the chosen month
The horseshoe symbol pulls up the option prices for the chosen month
The contract pulls up a comprehensive series of contract months for the particular commodity

Chart:

If you have explorer 6.0 or higher you can print charts, save charts, open saved charts and e-mail charts by placing your mouse cursor at the top right corner of the chart.
To view different time frames click the time frame button at the bottom of the chart. You can get ten minute delayed information by switching between tick and 5minutes.

Contract:

To view a perpetual/continuous chart - delete the month and year details then press go to view the chart. To view other contracts use the drop down menu on symbol to choose a contract. The months and year can be utilised to choose the contract period you want for the commodity chosen. If the contract is not in the drop down list you can type the symbol (if you know it) in the contract box, otherwise go back to the page with all the contract names to choose the contract.

Chart Display:

To increase the size of the charts alter the size to medium or large
To compress the charts alter the density to medium or high
To view an intra-day time, use the drop down menu and then enter the number of minutes you want to view in the right hand side box. The other time periods are standard which can also be chosen below the chart by clicking the time variable button.
To view a particular charting style, use the drop down menu.

Studies:

Certain studies can be designed to suit the parameters that you want. Enter the values in the boxes from the left - hand side

The data and chart information are shown in pop-up boxes, to view other commodities close the pop-up box to proceed further. To refresh the data prices and charts press F5

If you don't have Explorer 6.0 you can download it from www.microsoft.com, for the best display settings change the resolution to 1024 X 768. (This can be done through the Control panel of your computer). If you have any questions feel free to contact your advisor at CK Locke & Partners.